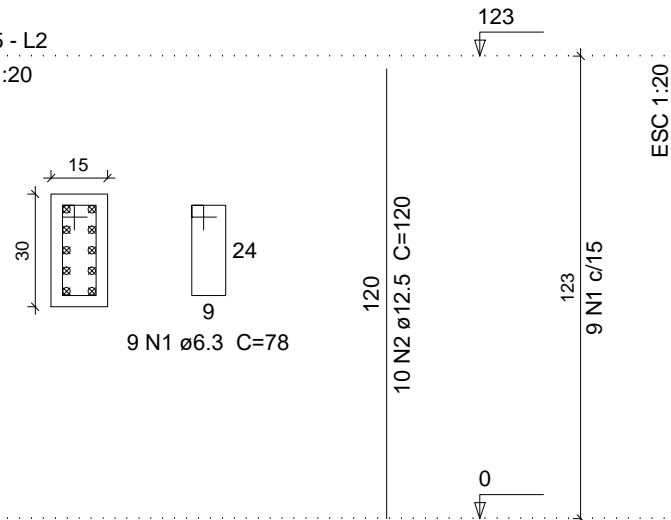
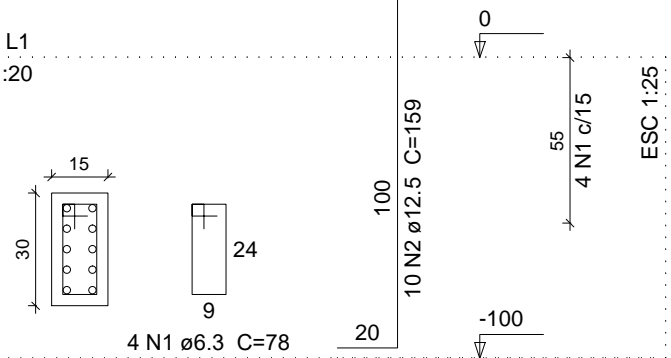


N+165 - L2  
ESC 1:20



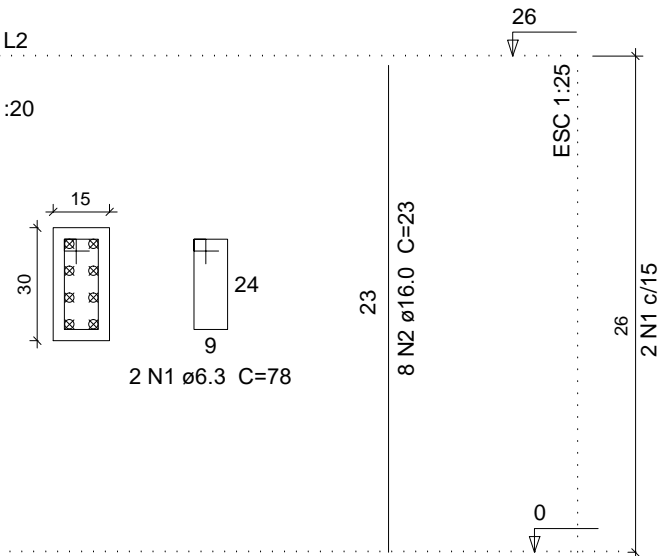
N-00 - L1  
ESC 1:20



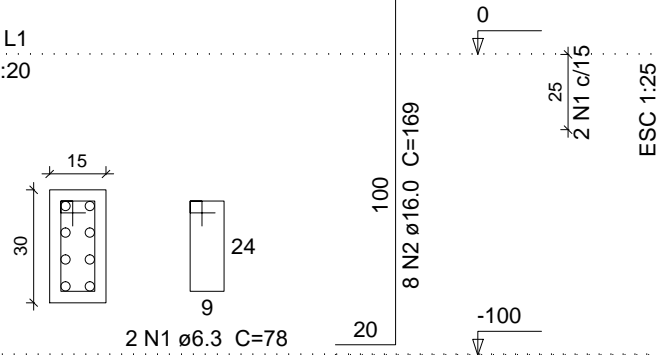
ELEMENTO	AÇO	N	DIAM (mm)	QUANT (Barras)	UNIT (cm)	C.TOTAL (cm)
P1	CA50	1	6.3	2	78	156
	CA50	2	16.0	8	23	184
P6	CA50	1	6.3	11	78	858
	CA50	2	12.5	10	162	1620

AÇO	DIAM (mm)	C.TOTAL (m)	PESO (kg)
CA50	6.3	10.2	2.5
	12.5	16.2	15.6
	16.0	1.9	2.9
PESO TOTAL (kg)			
CA50	21		

ESC 1:20



N-00 - L1  
ESC 1:20



ELEMENTO	AÇO	N	DIAM (mm)	QUANT (Barras)	UNIT (cm)	C.TOTAL (cm)
P1	CA50	1	6.3	2	78	156
	CA50	2	16.0	8	169	1352
P2	CA50	1	6.3	3	88	264
	CA50	2	12.5	8	114	912
P3	CA50	1	6.3	7	88	616
	CA50	2	12.5	8	114	912
P4	CA50	1	6.3	5	78	390
	CA50	2	12.5	10	159	1590

AÇO	DIAM (mm)	C.TOTAL (m)	PESO (kg)
CA50	6.3	14.3	3.5
	12.5	34.2	32.9
	16.0	13.6	21.3
PESO TOTAL (kg)			
CA50	57.7		

ELEMENTO	AÇO	N	DIAM (mm)	QUANT (Barras)	UNIT (cm)	C.TOTAL (cm)
N+165						
P4	CA50	1	6.3	6	78	468
	CA50	2	12.5	10	78	780
P5	CA50	1	6.3	9	78	702
	CA50	2	12.5	10	120	1200
N-00						
P5	CA50	1	6.3	4	78	312
	CA50	2	12.5	10	159	1590
P6	CA50	1	6.3	3	78	234
	CA50	2	12.5	10	159	1590

AÇO	DIAM (mm)	C.TOTAL (m)	PESO (kg)
CA50	6.3	17.2	4.2
	12.5	51.6	49.7
PESO TOTAL (kg)			
CA50	53.9		



PREFEITURA MUNICIPAL DE  
**VÂRZEA GRANDE**  
*amar - cuidar - acreditar*

Av. Castelo Branco, Espaço Municipal, 2500 - Centro Sul, Várzea Grande/MT  
CEP 78125-700 - Fone/Fax: 65 3688 8000

**AUTOR DO PROJETO**

**MARCELO FRANÇA MARTINS**  
**ENGENHEIRO CIVIL**  
**CREA:1014629756D-GO**

**ESTRUTURAL - RAMPA ACESSO ADM.**

**LOCALIZAÇÃO:** AVENIDA CASTELO BRANCO, ESQUINA  
COM A RUA CAPITÃO COSTA - VÁRZEA  
GRANDE MT

**ARM. PILARES DA RAMPA**

<b>UNIDADE:</b>
-----------------

**ESCALA:**

FOLHA:

02/02